

**SPECIAL OPERATIONS SUPPORT BATTALION (AIRBORNE)**

DESIGNATION: — SUPPORT BATTALION (AIRBORNE)

HEADQUARTERS, DEPARTMENT OF THE ARMY

1 APRIL 1985 • CHANGE 00

K 5

TABLE OF ORGANIZATION AND EQUIPMENT  
TOE 31705L000  
CHANGE 00HEADQUARTERS, DEPARTMENT OF THE ARMY  
WASHINGTON, D. C.,  
1 APRIL 1985**SECTION I  
ORGANIZATION**

1. MISSION. A. TO PROVIDE DEDICATED ADMINISTRATIVE AND LOGISTICAL SUPPORT TO THE HEADQUARTERS, ARMY SPECIAL OPERATIONS COMMAND (HQ, ARSOC).

B. WHEN DIRECTED, TO PROVIDE SUPPORT TO OTHER ARMY SPECIAL OPERATIONS FORCES (ARSOF).

2. ASSIGNMENT. ORGANIC TO THE SPECIAL OPERATIONS COMMAND (SOCCOM). TOE 31705L000.

3. CAPABILITIES. A. AT LEVEL 1, THIS UNIT IS DESIGNED TO PROVIDE DEDICATED SUPPORT TO AN ARSOC, OR CAN BE TASK ORGANIZED INTO TWO ELEMENTS CAPABLE OF SUPPORTING TWO ARSOF IN TWO THEATERS. THE SPECIAL OPERATIONS SUPPORT BATTALION:

(1) PROVIDES LIMITED, DEDICATED, AND SPECIALIZED COMBAT SERVICE SUPPORT (LESS PERSONNEL ADMINISTRATIVE SUPPORT AND FIELD SERVICES) TO THE HQ, ARSOC.

(2) PROVIDES THE HQ, ARSOC WITH DEDICATED TRANSPORTATION AND MATERIAL HANDLING CAPABILITY.

(3) COORDINATES WITH IN-THEATER COMBAT SERVICE SUPPORT ASSETS TO INSURE THE RESUPPLY AND REEQUIPPING OF DEPLOYED SPECIAL OPERATIONS UNITS, TO INCLUDE LIMITED STORAGE AND RESUPPLY AT FORWARD STAGING AREAS.

(4) PROCESSES REQUISITIONS; AND MONITORS THE RECEIPT AND MAINTENANCE OF NECESSARY RECORDS RELATING TO THE ISSUANCE AND DISTRIBUTION OF RATIONS, SUPPLIES, POL, AND EQUIPMENT FOR A DEPLOYED SPECIAL OPERATIONS FORCE, AND THE HQ, ARSOC.

(5) COORDINATES, THROUGH AVAILABLE SOURCES, FOR THE ACQUISITION OF AND LOGISTICAL SUPPORT FOR SOF UNIQUE ITEMS.

(6) PROVIDES UNIT MAINTENANCE SUPPORT FOR ORGANIC EQUIPMENT, LESS COMMO; INTERMEDIATE WHEELED VEHICLES, SMALL ARMS, AND GENERATOR (DIRECT SUPPORT) MAINTENANCE FOR ORGANIC EQUIPMENT AND FOR THE OTHER ARSOC ELEMENTS (SOCCOM, SPECIAL OPERATIONS COMMUNICATIONS BATTALION, SPECIAL OPERATIONS INTELLIGENCE SUPPORT BATTALION).

(7) ESTABLISHES FORWARD BASED AMMUNITION AND POL SUPPLY POINTS FOR DEPLOYED SPECIAL OPERATIONS FORCES, WITH A CAPABILITY TO TRANSPORT (USING ORGANIC WHEELED VEHICLES), AND TO HANDLE SUCH ITEMS. IN THEATERS WITHOUT A TRANSPORTATION INFRASTRUCTURE, THIS CAPABILITY IS BASED ON THE ASSIGNMENT OF A SPECIAL OPERATIONS AVIATION BATTALION TO THE THEATER ARSOC HQ, OR AVAILABILITY OF OTHER IN-THEATER TRANSPORTATION ASSETS.

(8) PROVIDES MOVEMENT CONTROL FOR THE TRANSPORTATION OF PERSONNEL AND MATERIAL INTO AND WITHIN THE THEATER, ASSISTS IN THE DEPLOYMENT OF THE ARSOC, AND, ON ORDER, AUGMENTS THE THEATER MOVEMENT CONTROL CENTER (MCC) PERSONNEL.

(9) PROVIDES FOOD SERVICE SUPPORT FOR THE ARSOC AND ARSOC ELEMENTS WHICH ARE COLLOCATED WITH THE ARSOC HQ.

(10) COORDINATES FOR, AND/OR PROVIDES REGIONAL MEDICAL SERVICE SUPPORT, SUPPLIES, AND INITIAL TREATMENT FOR A DEPLOYED ARSOC HQ.

(A) PROVIDES MEDICAL CLEARING FACILITIES.

(B) CAN BE USED AS A PROVISIONAL HOLDING FACILITY IN UNDEVELOPED THEATERS OF OPERATION.

(C) PROVIDES LIMITED MEDICAL SUPPLY SUPPORT FOR ARSOC ELEMENTS COLLOCATED WITH THE ARSOC HQ.

72

**TABLE OF ORGANIZATION AND EQUIPMENT**  
**TOE 31705L000**  
**CHANGE 00**

**HEADQUARTERS, DEPARTMENT OF THE ARMY**  
**WASHINGTON, D. C.,**  
**1 APRIL 1985**

(10) PROVIDES PREVENTIVE MEDICAL ENVIRONMENTAL HEALTH SURVEILLANCE, INSPECTIONS, AND CONSULTATION SERVICE FOR THE ARSOC HQ.

(11) ON ORDER, PROVIDES LIMITED LOGISTICAL SUPPORT, TO INCLUDE MEDICAL SUPPORT, FOR THE SUBORDINATE DEPLOYED ARSOF ELEMENTS NOT COLLOCATED WITH THE ARSOC HQ.

(12) THIS UNIT IS DEPENDENT UPON THE SPECIAL OPERATIONS COMMUNICATIONS BATTALION (SOCB), TOE 11705L000, FOR INTERMEDIATE (DS) LEVEL CE MAINTENANCE, AND ON TFFD UNITS FOR WATER PURIFICATION CAPABILITY AND ENGINEER SUPPORT.

B. THE COLUMNS UNDER LEVELS 2 AND 3 ADAPT THIS TABLE FOR REDUCED OPERATIONAL CAPABILITIES IN DECREMENTS OF 10%, FROM APPROXIMATELY 90% FOR LEVEL 2 TO APPROXIMATELY 80% FOR LEVEL 3.

C. THIS UNIT IS NOT ADAPTABLE TO TYPE B ORGANIZATION.

D. THE COLUMNS DESIGNATED BY LEVEL 1 THROUGH 3 ARE DESIGNED TO RELATE TO THE CATEGORIES ESTABLISHED IN AR 220-1, UNIT STATUS REPORTING.

E. INDIVIDUALS OF THIS ORGANIZATION, EXCEPT MEDICAL

PERSONNEL, ASSIST IN THE COORDINATED DEFENSE OF THE UNIT'S AREA OR INSTALLATION.

F. THIS UNIT PERFORMS UNIT MAINTENANCE ON ITS ORGANIC EQUIPMENT, LESS COMMUNICATIONS-ELECTRIC EQUIPMENT.

4. BASIS OF ALLOCATION. ONE PER SPECIAL OPERATIONS COMMAND, TOE 31701L000.

5. CATEGORY. THIS UNIT IS DESIGNATED A CATEGORY II UNIT. (FOR UNIT CATEGORIES, SEE AR 310-25.)

6. MOBILITY. A. THIS UNIT IS CAPABLE OF TRANSPORTING X,XXX POUNDS (XXX CUBIC FEET) OF TOE EQUIPMENT WITH ORGANIC VEHICLES.

B. THIS UNIT HAS X,XXX POUNDS (XXX CUBIC FEET) OF TOE EQUIPMENT REQUIRING TRANSPORTATION.

7. DOCTRINE. THE FOLLOWING DOCTRINAL PUBLICATIONS ARE APPLICABLE TO THE OPERATION OF THIS UNIT:

FM 100-26 (DRAFT), SPECIAL OPERATIONS FORCES.

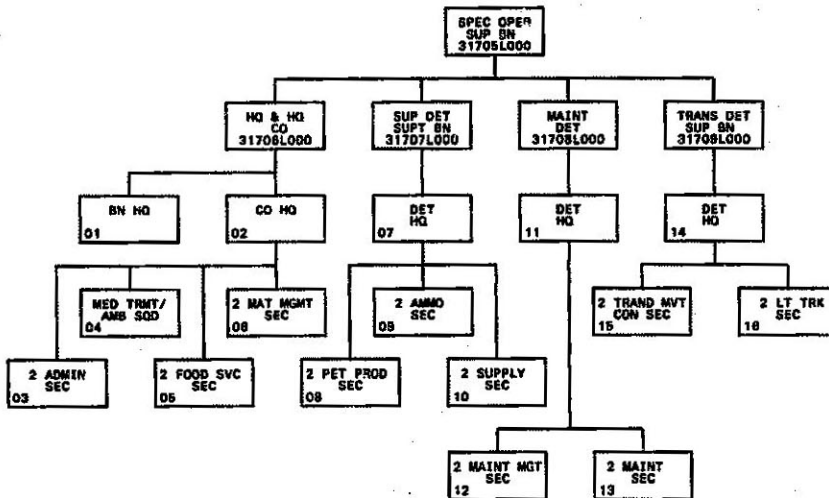
TRADOC PAMPHLET 525-34, US ARMY OPERATIONAL CONCEPT FOR SPECIAL OPERATIONS FORCES, 26 JULY 1984.

73

M 5

**TABLE OF ORGANIZATION AND EQUIPMENT**  
**TOE 31705L000**  
**CHANGE 00**

**HEADQUARTERS, DEPARTMENT OF THE ARMY**  
**WASHINGTON, D. C.,**  
**1 APRIL 1985**



74

N 5

TABLE OF ORGANIZATION AND EQUIPMENT  
TOE 31705L000  
CHANGE 00  
SO SUPPORT BN (SOSB)

HEADQUARTERS, DEPARTMENT OF THE ARMY  
WASHINGTON, D. C.,  
1 APRIL 1985

SECTION II

PARA	LINE/ LIN	CHG NO	ERC	DESCRIPTION	GRADE	MOS	BR	DCPC	ASL/RMKS				STRENGTH LEVELS							
									1	2	3	4	1	2	3	AUG TYPE CADRE				
												A	B	C						
01				HHC																
				HHC																
	01			OFFICER									4	4	4					
	02			WARRANT OFFICER									3	3	3					
	03			ENLISTED									40	43	41					
				PARA TOTAL									56	50	48					
02				SUPPLY DETACHMENT																
				SUPPLY DETACHMENT																
	01			OFFICER									2	2	2					
	02			WARRANT OFFICER																
	03			ENLISTED									39	37	33					
				PARA TOTAL									41	38	35					
03				MAINT DETACHMENT																
				MAINT DETACHMENT																
	01			OFFICER									2	2	2					
	02			WARRANT OFFICER									2	2	2					
	03			ENLISTED									29	28	22					
				PARA TOTAL									33	32	26					
04				TRANS DETACHMENT																
				TRANS DETACHMENT																
	01			OFFICER									4	4	4					
	02			WARRANT OFFICER																

TOE 31705L000

76

A 6

TABLE OF ORGANIZATION AND EQUIPMENT  
TOE 31705L000  
CHANGE 00  
SO SUPPORT BN (SOSB)

HEADQUARTERS, DEPARTMENT OF THE ARMY  
WASHINGTON, D. C.,  
1 APRIL 1985

SECTION II

PARA	LINE/ LIN	CHG NO	ERC	DESCRIPTION	GRADE	MOS	BR	DCPC	ASL/RMKS				STRENGTH LEVELS							
									1	2	3	4	1	2	3	AUG TYPE CADRE				
												A	B	C						
	03			ENLISTED									29	27	25					
				PARA TOTAL									33	31	29					
				SRC TOTAL									163	152	138					
				RECAPITULATION BY GRADE																
				OFFICERS																
					LTC	92A00	NO	P5					1	1	1					
													1	1	1					
					MAJ	91A97	NO	P5					1	1	1					
													1	1	1					
					CPT	62B00	MC	P5					1	1	1					
													1	1	1					
													1	1	1					
													1	1	1					
													1	1	1					
													5	5	5					
													3	3	3					
													1	1	1					
													1	1	1					
													5	5	5					
													2	2	2					
													2	2	2					
													1	1	1					
													2	2	2					

TOE 31705L000

77

B 6

TABLE OF ORGANIZATION AND EQUIPMENT  
 TOE 31705L000  
 CHANGE 00  
 SO SUPPORT BN (SO SB)

HEADQUARTERS, DEPARTMENT OF THE ARMY  
 WASHINGTON, D. C.,  
 1 APRIL 1985

SECTION II

PARA	LINE/ LN	CNG NO	ERC	DESCRIPTION	GRADE	MOS	BR	DCPC	ASR/RMKS				STRENGTH LEVELS			AUG	TYPE	CADRE			
									1	2	3	4	1	2	3				A	B	C
				<b>OFFICERS TOTAL</b>								3	3	3							
				<b>ENLISTED</b>	E-9	00Z5P		P5					17	17	17						
					E-8	76Z5M		P5					1	1	1						
					E-7	54B4P		P5					1	1	1						
						63H4P		P5					3	3	3						
						75Z4P		P5					2	2	2						
						76V4M		P5					1	1	1						
						75Y4P		P5					1	1	1						
						83M4P		P5					1	1	1						
						94B4P		P5					2	2	2						
													11	11	11						
					E-6	18D3O		P1					2	2	2						
						55B3P		P5					2	2	2						
						77F3P		P5					2	2	2						
						88M3P		P5					2	2	2						
						88N3P		P5					2	2	2						
						94B3P		P5					2	2	2						
													12	12	12						
					E-5	52D2P		P5					1								

TOE 31705L000

76

C 6

TABLE OF ORGANIZATION AND EQUIPMENT  
 TOE 31705L000  
 CHANGE 00  
 SO SUPPORT BN (SO SB)

HEADQUARTERS, DEPARTMENT OF THE ARMY  
 WASHINGTON, D. C.,  
 1 APRIL 1985

SECTION II

PARA	LINE/ LN	CNG NO	ERC	DESCRIPTION	GRADE	MOS	BR	DCPC	ASR/RMKS				STRENGTH LEVELS			AUG	TYPE	CADRE			
									1	2	3	4	1	2	3				A	B	C
						55B2P		P5					2	2	2						
						63B2P		P5					2	2	2						
						63W2P		P5					2	2	2						
						76V2P		P5					2	2	2						
						77F2P		P5					2	2	2						
						88N2P		P5					2	2	2						
						91A2P		P1					1	1	1						
						91B2P		P1					1	1	1						
						94B2P		P5					2	2	2						
													17	16	16						
					E-4	31K1P		P5					1	1	1						
						45B1P		P5					2	2	2						
						52D1P		P5					1	1	1						
						55B1P		P5					2	2	2						
						63B1P		P5					2	2	1						
						63S1P		P5					2	2	2						
						63W1P		P5					2	2	1						
						75B1P		P5					2	2	2						
						76P1P		P5					4	4	4						
						76V1P		P5					2	2	2						
						76Y1P		P5					3	3	3						
						77F1P		P5					6	6	6						

TOE 31705L000

79

D 8

SECTION II

PARA	LINE/ LIN	CHG NO	ERC	DESCRIPTION	GRADE	MOS	BR	DCPC	ASR/RMKS				STRENGTH LEVELS					
									1	2	3	4	1	2	3	AUG TYPE CADRE		
																A	B	C
						88M1P		P5					8	8	6			
						88N1P		P5					2	2	2			
						91A1P		P1					3	3	3			
						94B1P		P5					6	4	2			
													46	46	40			
					E-3	31K1P		P5					1	1	1			
						52D1P		P5					2	2	2			
						55B1P		P5					2	2	2			
						63B1P		P5					4	4	1			
						63W1P		P5					2	2	1			
						75B1P		P5					2	2	2			
						78P1P		P5					4	4	4			
						76V1P		P5					8	6	6			
						78Y1P		P5					2					
						77F1P		P5					10	8	8			
						88M1P		P5					12	10	10			
						91A1P		P1					3	3	3			
						94B1P		P5					6	4	4			
													58	48	40			
						<b>ENLISTED TOTAL</b>							146	135	121			
						<b>SRC TOTAL</b>							163	152	138			
						<b>RECAPITULATION BY MOS</b>												

TOE 31705L000

80

E 6

SECTION II

PARA	LINE/ LIN	CHG NO	ERC	DESCRIPTION	GRADE	MOS	BR	DCPC	ASR/RMKS				STRENGTH LEVELS					
									1	2	3	4	1	2	3	AUG TYPE CADRE		
																A	B	C
				<b>OFFICERS</b>		800A7	SW	P5					1	1	1			
						82B00	MC	P5					1	1	1			
						88A00	TC	P5					4	4	4			
						915E7	SW	P5					2	2	2			
						91A00		P5					2	2	2			
						91A97	NO	P5					1	1	1			
						920S7	WO	P5					1	2	2			
						92A00		P5					1	1	1			
						92A00	NO	P5					2	2	2			
						92A97		P5					1	1	1			
													17	17	17			
						<b>OFFICERS TOTAL</b>												
						<b>ENLISTED</b>												
						00Z5P		P5					1	1	1			
						18D30		P1					2	2	2			
						31K1P		P5					2	2	2			
						45B1P		P5					2	2	2			
						52D1P		P5					3	3	3			
						52D2P		P5					1					
						54B4P		P5					1	1	1			
						55B1P		P5					4	4	2			
						55B2P		P5					2	2	2			
						55B3P		P5					2	2	2			
						63B1F		P5					6	6	2			

TOE 31705L000

81

F 6

SECTION II

PARA	LINE/ LIN	CHG NO	ERC	DESCRIPTION	GRADE	NOS	BR	DCPC	ASU/RANKS				STRENGTH LEVELS					
													AUG			TYPE	CADRE	
									1	2	3	4	1	2	3	A	B	C
						63B2P		P5					2	2	2			
						63H4P		P5					3	3	3			
						63S1P		P5					2	2	2			
						63W1P		P5					4	4	2			
						63W2P		P5					2	2	2			
						75B1P		P5					4	4	4			
						75Z4P		P5					2	2	2			
						76P1P		P5					8	8	8			
						76V1P		P5					6	6	6			
						76V2P		P5					2	2	2			
						76Y1P		P5					5	3	3			
						76Y4M		P5					1	1	1			
						76Y4P		P5					1	1	1			
						76Z5M		P5					1	1	1			
						77F1P		P5					15	14	12			
						77F2P		P5					2	2	2			
						77F3P		P5					2	2	2			
						88M1P		P5					20	18	16			
						88M2P		P5					2	2	2			
						88M4P		P5					1	1	1			
						88N1P		P5					2	2	2			
						88N2P		P5					2	2	2			

TOE 31705L000

62

G 6

TABLE OF ORGANIZATION AND EQUIPMENT  
TOE 31705L000  
CHANGE 00  
SO SUPPORT BN (SOSB)

HEADQUARTERS, DEPARTMENT OF THE ARMY  
WASHINGTON, D. C.,  
1 APRIL 1985

SECTION II

PARA	LINE/ LIN	CHG NO	ERC	DESCRIPTION	GRADE	NOS	BR	DCPC	ASU/RANKS				STRENGTH LEVELS					
													AUG			TYPE	CADRE	
									1	2	3	4	1	2	3	A	B	C
						88N2P		P5					2	2	2			
						91A1P		P1					6	6	6			
						91A2P		P1					1	1	1			
						91B2P		P1					1	1	1			
						94B1P		P5					12	8	6			
						94B2P		P5					2	2	2			
						94B3P		P5					2	2	2			
						94B4P		P5					2	2	2			
						<b>ENLISTED TOTAL</b>							146	135	121			
						<b>SRC TOTAL</b>							183	152	138			
						<b>RECAPITULATION</b>												
	A33210		C	ACCESSORY OUTFIT GASOLINE FIELD RANGE: ACCOM 50 MEN									4	4	4			
	A32080		B	ALARM CHEMICAL AGENT AUTOMATIC: PORTABLE MANPACK									6	6	6			
	A58243		B	ANALYZER SET ENGINE: PORTABLE SOLID STATE (STE/ICEPM)									2	2	2			
	A79381		A	ANTENNA GROUP: OE-354Q/GRC									1	1	1			
	B43272		B	BAYONET-KNIFE: W/SCABBARD FOR M16A1 RIFLE									159	147	133			
	C38422		B	BURNER UNIT GASOLINE FIELD RANGE OUTFIT: W/COMPONENTS									16	16	16			
	C62375		B	BATTERY CASE: Z-AJ-E1									1	1	1			
	C68719		B	CABLE TELEPHONE: WD-1/TT DR-8 1/2 KM									2	2	2			
	C84541		B	CONTAINER ASSEMBLY REFRIGERATED: 8X8X20 W/8000 BTU REF UNIT									4	4	4			
	C89145		C	CAMOUFLAGE SCREEN SYSTEM: WOODLAND LT WT RADAR SCAT W/D SPT SYS									213	213	213			

TOE 31705L000

63

H 6

TABLE OF ORGANIZATION AND EQUIPMENT  
TOE 31705L000  
CHANGE 00  
SO SUPPORT BN (SOSS)

HEADQUARTERS, DEPARTMENT OF THE ARMY  
WASHINGTON, D. C.,  
1 APRIL 1985

SECTION II

PARA	LINE/ LN	CHG NO	ERC	DESCRIPTION	GRADE	MOS	BR	DCPC	ASU/RMS				STRENGTH LEVELS			AUG	TYPE	CADRE
									1	2	3	4	1	2	3			
									A	B	C							
	C88213		C	CAMOUFLAGE SCREEN SUPPORT SYSTEM: WOODLAND/DESERT PLASTIC POLES								213	213	213				
	D86573		B	CHARGER BATTERY: PP-34/MSM								2	2	2				
	E00533		B	CHARGER RADIAC DETECTOR: PP-157B/PD								4	4	4				
	E02965		B	CHASSIS SEMITRAILER: COUPLEABLE MILVAN CONTAINER TRANSPORTER								2	2	2				
	E34747		B	CLEANING MACHINE FUEL CAN AND DRUM:								2	2	2				
	E56611		B	MEDICAL EQUIPMENT SET MEDICAL LABORATORY: COMBAT INDIVIDUAL								2	2	2				
	E81310		B	COMPARATOR COLOR: HYDROGEN ION AND RESIDUAL CHLORINE								2	2	2				
	E89105		B	COMP UNIT RCP: AIR REC GAS DRVN 5 CFM 175 PSI								2	2	2				
	E70054		B	COMP UNIT RCP: TRK 2 WHL PNEU TIRES GAS DRVN 5 CFM 175 PSI								2	2	2				
	E84531		B	CONTAINER ASSEMBLY: AIRMOBILE TYPE X-4 200 CU FT CAP								2	2	2				
	E92841		B	PRESSURE ASSEMBLY CONTROL: W/MULTIPLE COMPONENTS								6	6	6				
	E98103		A	ELEC TRANSFER KEYING DEVICE ETKD: KYX-13/TSEC								1	1	1				
	F08479		B	CONVEY WHL GRVTY: 600 LB PER FT TEST CAP 10 FT LG STRAIGHT SECT								4	4	4				
	F95504		B	DENTAL INSTRUMENT AND SUPPLY SET EMERGENCY TREATMENT FIELD:								2	2	2				
	G34805		B	DOLLY SET LIFT TRANSPORTABLE SHELTER: 2 1/2 TON								8	8	8				
	G68968		B	DRUM FABRIC COLLAPSIBLE: LIQUID FUEL 500 GAL CAPACITY								12	12	12				
	G84243		C	DUPLICATING MACHINE OFFSET PROCESS: FLR MTG 13 IN LG 9-1/2 IN W								2	2	2				

TOE 31705L000

84

1 6

TABLE OF ORGANIZATION AND EQUIPMENT  
TOE 31705L000  
CHANGE 00  
SO SUPPORT BN (SOSS)

HEADQUARTERS, DEPARTMENT OF THE ARMY  
WASHINGTON, D. C.,  
1 APRIL 1985

SECTION II

PARA	LINE/ LN	CHG NO	ERC	DESCRIPTION	GRADE	MOS	BR	DCPC	ASU/RMS				STRENGTH LEVELS			AUG	TYPE	CADRE
									1	2	3	4	1	2	3			
									A	B	C							
	G85373		C	DUPLICATING MACHINE STENCIL PROCESS: BENCH MTR DRIVEN W/O CAB								2	2	2				
	H52087		B	FILTER-SEPARATOR LIQUID FUEL: 350GPM 150PSI 4IN INLET 4IN OUTLET								6	6	6				
	H94824		B	FORWARD AREA REFUELING EQUIPMENT: (FARE)								4	4	4				
	J04717		B	FUEL SYSTEM SUPPLY POINT: FTBL 60000 GAL LESS FLTR PUMP AND TANK								2	2	2				
	J35013		B	GEN ST DSL ENG: 5KW 60HZ 1-3PH AC 120/208 120/240V TAC UTIL								2	2	2				
	J35835		B	GEN ST DSL ENG: 18KW 60HZ 3PH AC 120/208 240/416V SKD TAC UTIL								2	2	2				
	J45689		A	GEN ST GAS ENG: 3KW 60HZ 1-3PH 120/240 120/208V SKD TAC UTILITY								2	2	2				
	J45689		B	GEN ST GAS ENG: 3KW 60HZ 1-3PH 120/240 120/208V SKD TAC UTILITY								1	1	1				
	K25342		C	HEATER IMMERSION LIQUID FUEL FIRED: 34-3/4 IN LG OF HEATER								32	32	32				
	K81513		B	HYPODERMIC INJECTION APPARATUS JET AUTOMATIC: FOOT OPERATED								2	2	2				
	K87280		A	INSTALLATION KIT: MK-1308/VRC-47 F/AN/VRC-47 IN M151								1	1	1				
	K87328		B	INSTL KIT: MK-1443/VRC-48 F/VRC-48 INSTL NOT COVERED BY SPEC KIT								2	2	2				
	K87449		A	INSTALLATION KIT: MK-1810/VRC-47 F/AN/VRC-47 IN M882 OR M892								1	1	1				
	K87449		B	INSTALLATION KIT: MK-1810/VRC-47 F/AN/VRC-47 IN M882 OR M892								1	1	1				
	K87458		A	INSTL KIT: MK-1817/GRC F/AN/VRC-48/53/64 GRC-125/160 IN M882 /M892								4	4	4				

TOE 31705L000

85

J 6

TABLE OF ORGANIZATION AND EQUIPMENT  
TOE 31705L000  
CHANGE 00  
SO SUPPORT BN (SO SB)

HEADQUARTERS, DEPARTMENT OF THE ARMY  
WASHINGTON, D. C.,  
1 APRIL 1985

SECTION II

PARA	LINE/ LN	CHG NO	ERC	DESCRIPTION	GRADE	MOS	BR	DCPC	ASU/RMKS				STRENGTH LEVELS			AUG	TYPE	CADRE
									1	2	3	4	1	2	3			
	K87458		B	INSTL KIT: MK-1817/GRC F/AN/VRC-46/53/64 GRC-125/160 IN M882 /M882								5	5	5				
	K87537		A	INSTL KIT: MK-1839VRC F/KY-57 W/AN/VRC-12 OR AN/VRC-47 IN M151A1								1	1	1				
	K87538		A	INSTL KIT: MK-1340VRC F/KY-57 W/AN/VRC-46 IN M882 OR M882								4	4	4				
	K87538		B	INSTL KIT: MK-1840VRC F/KY-57 W/AN/VRC-46 IN M882 OR M882								2	2	2				
	K87561		A	INST KIT: MK-1863VRC F/KY-57 W/AN/VRC-12 OR AN/VRC47 IN M882 /M882								1	1	1				
	K87561		B	INST KIT: MK-1863VRC F/KY-57 W/AN/VRC-12 OR AN/VRC47 IN M882 /M882								1	1	1				
	K87562		B	RECAPITULATION														
	K87562		B	INS KIT: MK-1864VRC F/KY-57 W/AN/VRC-64 AN/GRC-160 IN M882 /M882								3	3	3				
	K87564		B	INSTL KIT: MK-1866VRC F/KY-57 W/AN/VRC-46 IN S250 OR S260								2	2	2				
	L28351		C	KITCHEN FIELD TRAILER MOUNTED: MTD ON M103A3 TRAILER								4	4	4				
	L44595		B	LAUNCHER GRENADE 40 MILLIMETER: SGLE SHOT RIFLE MTD DTCHBLE W/E								2	2	2				
	L83994		B	LIGHT SET GENERAL ILLUMINATION: 25 OUTLET (ARMY)								6	6	6				
	L85295		B	LIGHT SURGICAL FIELD: 110 VOLT AC OR 24 VOLT DC								2	2	2				
	L81975		B	MACHINE GUN CALIBER .50: HB FLEXBLE (GROUND AND VEHICLE) W /E								6	6	6				
	L82386		B	MACHINE GUN 7.62 MILLIMETER: LIGHT FLEXBLE								4	4	4				
	M11825		A	MASK CBR: PROTECTIVE FIELD								163	152	136				
	M26413		B	MEDICAL EQUIPMENT SET GROUND AMBULANCE:								2	2	2				

TOE 31705L000

66

K 6

TABLE OF ORGANIZATION AND EQUIPMENT  
TOE 31705L000  
CHANGE 00  
SO SUPPORT BN (SO SB)

HEADQUARTERS, DEPARTMENT OF THE ARMY  
WASHINGTON, D. C.,  
1 APRIL 1985

SECTION II

PARA	LINE/ LN	CHG NO	ERC	DESCRIPTION	GRADE	MOS	BR	DCPC	ASU/RMKS				STRENGTH LEVELS			AUG	TYPE	CADRE
									1	2	3	4	1	2	3			
	M52274		B	MES BATTALION AID STATION:								2	2	2				
	M80449		B	MULTIMETER DIGITAL: AN/PSM-45								4	4	4				
	M74364		B	MOUNT GUN: RING CAL .50								6	6	6				
	M75714		B	MOUNT TRIPOD MACHINE GUN: 7.62 MILLIMETER								4	4	4				
	N02758		A	NET CONTROL DEVICE NCD: KYX-15/TSEC								1	1	1				
	N04456		B	NIGHT VISION GOGGLES: AN/PVS-5								6	6	6				
	N04732		B	NIGHT VISION SIGHT INDIVIDUAL SERVED WEAPON: AN/PVS-4								2	2	2				
	N96741		B	PISTOL CALIBER .45 AUTOMATIC:								5	5	5				
	P38588		B	POWER SUPPLY: PP-2953/U								2	2	2				
	P87051		B	PUMPING ASSY FLAMBL LIQ ENG DRVN WHL: 4 IN OUT 350 GPM 275 FT HD								6	6	6				
	Q19339		B	RADIAC SET: AN/PDR-27								2	2	2				
	Q20935		B	RADIACMETER: IM-93/UD								13	13	13				
	Q21483		B	RADIACMETER: IM-174/PD								3	3	3				
	Q34306		B	RADIO SET: AN/GRC-160								3	3	3				
	Q53001		A	RADIO SET: AN/VRC-48								4	4	4				
	Q53001		B	RADIO SET: AN/VRC-48								4	4	4				
	Q54174		A	RADIO SET: AN/VRC-47								2	2	2				
	Q54174		B	RADIO SET: AN/VRC-47								1	1	1				
	Q78282		B	RADIO SET CONTROL GROUP: AN/GRA-39								1	1	1				
	R14154		C	RANGE OUTFIT FIELD GASOLINE:								8	8	8				
	R59160		C	REELING MACHINE CABLE HAND: RL-39								2	2	2				

TOE 31705L000

67

L 6



TABLE OF ORGANIZATION AND EQUIPMENT  
TOE 31705L000  
CHANGE 00  
SO SUPPORT BN (SOSB)

HEADQUARTERS, DEPARTMENT OF THE ARMY  
WASHINGTON, D. C.,  
1 APRIL 1985

SECTION II

PARA	LINE/ LIN	CHG NO	ERC	DESCRIPTION	GRADE	MOS	BR	DCPC	AS/RMKS				STRENGTH LEVELS					
									1	2	3	4	1	2	3	AUG	TYPE	CADRE
	R73791		B	REPAIR KIT COLLAPSIBLE FABRIC TANK: TYPE II REPAIRS UP TO 6 IN								2	2	2				
	R94877		B	RIFLE 5.56 MILLIMETER: M16A1								158	147	133				
	S01373		A	SPEECH SECURITY EQUIPMENT: TSEC/KY-57								8	8	8				
	S01373		B	SPEECH SECURITY EQUIPMENT: TSEC/KY-57								7	7	7				
	T00474		B	SHELTER SYSTEM COLLECTIVE PROTECTION CHEMICAL-BIOLOGICAL: 10-MAN								2	2	2				
	T05028		A	TRUCK UTILITY: TACTICAL 3/4 TON W/E M1009								1	1	1				
	T15675		B	SHOP EQUIPMENT MECHANICAL MAINTENANCE SHELTER MOUNTED:								2	2	2				
	T16597		B	SHOP EQUIPMENT SMALL ARMS REPAIR SHELTER MOUNTED:								2	2	2				
	T38660		B	TRUCK AMBULANCE: TACTICAL 5/4 TON 4X4 M1010								2	2	2				
	T40405		A	TAPE READER GENERAL PURPOSE: KO-18/TSEC								1	1	1				
	T49119		B	TRUCK LIFT FORK: DSL DRVN 10000 LB CAP 48IN LD CTR ROUGH TERRAIN								4	4	4				
	T59348		A	TRUCK CARGO: TACTICAL 5/4 TON 4X4 W/COMMO KIT								5	5	5				
	T59348		B	TRUCK CARGO: TACTICAL 5/4 TON 4X4 W/COMMO KIT								4	4	4				
	T59482		B	TRUCK CARGO: TACTICAL 5/4 TON 4X4 W/E M1008								4	4	4				
	U39016		B	STERILIZER SURG INSTR DRESS: PRES EXTR HTDCRS 12-1/2 BY 12-1 /2IN								2	2	2				
	U81707		B	SWITCHBOARD TELEPHONE MANUAL: SB-22/PT								4	4	4				
	V12552		B	TANK ASSEMBLY FABRIC COLLAPSIBLE: 10000 GAL PETRO RECAPTULATION								12	12	12				
	V31211		B	TELEPHONE SET: TA-312/PT								21	21	21				
	V98788		A	POWER SUPPLY VEHICLE: HYP-57/TSEC								8	8	8				

TOE 31705L000

88

M 6

TABLE OF ORGANIZATION AND EQUIPMENT  
TOE 31705L000  
CHANGE 00  
SO SUPPORT BN (SOSB)

HEADQUARTERS, DEPARTMENT OF THE ARMY  
WASHINGTON, D. C.,  
1 APRIL 1985

SECTION II

PARA	LINE/ LIN	CHG NO	ERC	DESCRIPTION	GRADE	MOS	BR	DCPC	AS/RMKS				STRENGTH LEVELS					
									1	2	3	4	1	2	3	AUG	TYPE	CADRE
	V98788		B	POWER SUPPLY VEHICLE: HYP-57/TSEC								9	0	9				
	W19880		B	TIEDOWN ASSEMBLY: CHAIN TYPE FOR HOLDING COLLAPSIBLE FABRIC DRUMS								4	4	4				
	W32593		B	SHOP EQUIPMENT AUTO MAINT AND REPAIR: OM COMMON NO 1 LESS POWER								2	2	2				
	W32867		B	SHOP EQUIPMENT AUTO MAINT AND REPAIR: ORG SUPPL NO 1 LESS POWER								2	2	2				
	W53004		B	TOOL KIT GENERAL MECHANICS: AUTOMOTIVE								20	20	20				
	W34848		B	TOOL KIT CARPENTERS: ENGINEER SQUAD W/CHEST								4	4	4				
	W51362		B	TOOL KIT SERVICE REFRIGERATION UNIT: GENERAL MAINTENANCE								4	4	4				
	W51910		B	TOOL KIT SMALL ARMS REPAIRMAN: ORDNANCE								2	2	2				
	W80351		B	WIRELINE ADAPTER: HX-57/TSEC								4	4	4				
	W89657		B	TRACTOR WHEELED WAREHOUSE: GAS 4000 LB								2	2	2				
	W95537		A	TRAILER CARGO: 3/4 TON 2 WHEEL W/E								5	5	5				
	W95537		B	TRAILER CARGO: 3/4 TON 2 WHEEL W/E								7	7	7				
	W95811		B	TRAILER CARGO: 1-1/2 TON 2 WHEEL W/E								10	10	10				
	W98270		A	TRAILER PLATFORM WAREHOUSE: WOOD RIGID/FRAME DRAWBAR W /COUPLINGS								18	18	18				
	W98825		B	TRAILER TANK: WATER 400 GALLON 1-1/2 TON 2 WHEEL W/E								8	8	8				
	X40794		B	TRUCK CARGO: DROP SIDE 5 TON 6X6 W/E								28	28	28				
	X40831		B	TRUCK CARGO: 5 TON 6X6 LWB W/E								4	4	4				
	X47818		B	TRUCK HAND PLATFORM: WOOD NONTILT TYPE								2	2	2				
	X59326		B	TRUCK TRACTOR: 5 TON 6X6 W/E								2	2	2				

TOE 31705L000

89

N 6

TABLE OF ORGANIZATION AND EQUIPMENT  
TOE 31705L000  
CHANGE 00  
SO SUPPORT BN (SOSB)

HEADQUARTERS, DEPARTMENT OF THE ARMY  
WASHINGTON, D. C.,  
1 APRIL 1985

SECTION II

PARA	LINE/ LIN	CHG NO	ERC	DESCRIPTION	GRADE	MOS	BR	DCPC	ASI/RMKS				STRENGTH LEVELS					
													AUG			TYPE		
									1	2	3	4	1	2	3	A	B	C
	V90788		B	POWER SUPPLY VEHICLE: HYP-57/TSEC								9	9	9				
	W19880		B	TIEDOWN ASSEMBLY: CHAIN TYPE FOR HOLDING COLLAPSIBLE FABRIC DRUMS								4	4	4				
	W32593		B	SHOP EQUIPMENT AUTO MAINT AND REPAIR: OM COMMON NO 1 LESS POWER								2	2	2				
	W32867		B	SHOP EQUIPMENT AUTO MAINT AND REPAIR: ORG SUPPL NO 1 LESS POWER								2	2	2				
	VJ3004		B	TOOL KIT GENERAL MECHANICS: AUTOMOTIVE								20	20	20				
	W34848		B	TOOL KIT CARPENTERS: ENGINEER SQUAD W/CHEST								4	4	4				
	W51362		B	TOOL KIT SERVICE REFRIGERATION UNIT: GENERAL MAINTENANCE								4	4	4				
	W51910		B	TOOL KIT SMALL ARMS REPAIRMAN: ORDNANCE								2	2	2				
	W60351		B	WIRELINE ADAPTER: HYX-57/TSEC								4	4	4				
	W69557		B	TRACTOR WHEELED WAREHOUSE: GAS 4000 LB								2	2	2				
	W85537		A	TRAILER CARGO: 3/4 TON 2 WHEEL W/E								5	5	5				
	W95537		B	TRAILER CARGO: 3/4 TON 2 WHEEL W/E								7	7	7				
	W95911		B	TRAILER CARGO: 1-1/2 TON 2 WHEEL W/E								10	10	10				
	W98270		A	TRAILER PLATFORM WAREHOUSE: WOOD RIGID/FRAME DRAWBAR W /COUPLINGS								18	18	18				
	W98825		B	TRAILER TANK: WATER 400 GALLON 1-1/2 TON 2 WHEEL W/E								8	8	8				
	X40794		B	TRUCK CARGO: DROP SIDE 5 TON 6X8 W/E								28	28	28				
	X40831		B	TRUCK CARGO: 5 TON 6X8 LWB W/E								4	4	4				
	X47818		B	TRUCK HAND PLATFORM: WOOD NONTILT TYPE								2	2	2				
	X59326		B	TRUCK TRACTOR: 5 TON 6X8 W/E								2	2	2				

TOE 31705L000

89

N 6

TABLE OF ORGANIZATION AND EQUIPMENT  
TOE 31705L000  
CHANGE 00  
SO SUPPORT BN (SOSB)

HEADQUARTERS, DEPARTMENT OF THE ARMY  
WASHINGTON, D. C.,  
1 APRIL 1985

SECTION II

PARA	LINE/ LIN	CHG NO	ERC	DESCRIPTION	GRADE	MOS	BR	DCPC	ASI/RMKS				STRENGTH LEVELS					
													AUG			TYPE		
									1	2	3	4	1	2	3	A	B	C
	X63299		B	TRUCK WRECKER: 5 TON 6X8 W/WINCH W/E								2	2	2				
	Y96182		B	YOKE TOWING AND LIFTING COLLAPSIBLE FABRIC DRUM: 500 GAL CAP								12	12	12				
				REMARKS														
	5P			OFFICER: PARACHUTIST														
	5S			OFFICER: RANGER-PARACHUTIST														
	7Z			OFFICER: LOGISTICIAN														
				OBSOLETE: SHAL-A PROGRAMING LANGUAGE														
				TECHNICIAN														
	H8			ENLISTED: RECOVERY OPERATIONS														
	Q5			ENLISTED: SPECIAL FORCES COMBAT														
				DIVING, MEDICAL														
	01			ALSO LIGHT VEHICLE DRIVER														
	04			ALSO RADIO OPERATOR														
	11			ARMED WITH PISTOL/REVOLVER														
	50			REQUIREMENT COUNTED ELSEWHERE, NOT INCLUDED IN TOTALS														
	82			DEVIATION FROM MARC REQUIREMENTS														
	760			SUBSTITUTION OF LIN C89085 OR C89128 IS AUTHORIZED WHEN UNIT IS OPERATING IN DESERT OR SNOW ENVIRONMENT, RESPECTIVELY														

TOE 31705L000

90

O 6

**TABLE OF ORGANIZATION AND EQUIPMENT**  
**TOE 31705L000**  
**CHANGE 00**  
**SO SUPPORT BN (SO SB)**

**HEADQUARTERS, DEPARTMENT OF THE ARMY**  
**WASHINGTON, D. C.,**  
**1 APRIL 1985**

**SECTION II**

PARA	LINE/ LIN	CNG NO	ERC	DESCRIPTION	GRADE	MOS	BR	DCPC	STRENGTH LEVELS											
									AS/RNKS							AUG		TYPE		CADRE
									1	2	3	4	1	2	3	A	B	C		
	762			SUBSTITUTION OF LIN C89070 OR C89064 IS AUTHORIZED WHEN UNIT IS OPERATING IN DESERT OR SNOW ENVIRONMENT, RESPECTIVELY MB: AS DIRECTED BY CO																
	800																			